



Lukawica 2002  
Stan. 22  
Fot. M. Piotrowski

View of the site from 16m height.

# Marcin Piotrowski, Krzysztof Werema MULTICULTURAL SITE No. 22 IN LUKAWICA IN SOUTH- EASTERN POLAND

The site is located in Roztocze Podkarpackie county. The investigation area is situated on the headland facing the channel from the north and west and surrounded by bog from the south.

In the north-eastern part of the site there is a spring forming the source of the river Lukawica. The source has stable temperature of about 9°C and never freezes in winter. During the excavation work they discovered the tracks of settlement from Paleolithic Age, Neolithic Age and Bronze Age. Moreover, they found the remains of settlement from Roman Age and Huge Migration as well as Early Medieval Period (close of VIII th century till half X th century).

Over 200 features were discovered on the excavated site of approximately 5.25 are. From the tens of thousands found artifacts, 95% are fragments of pottery. During the excavation, 2 meters under the surface, diverse deposits of clay were discovered.

Besides standard excavation works, planigraphy of artifacts from the surface and humus was conducted. Additionally, geophysical (magnetic), geochemical and paleobotanic tests were done.

The geophysical test became the most interesting source of data as it helped to create a map of magnetic anomaly initiated by burnt materials (ash, carbon, slag, clay). The natural sand of the bottom surface, which doesn't display magnetic activity, highlighted these anomalies. The examinations north-west part of the headland, adjacent to the bog, primitive smelting furnaces (possibly Roman age) were spotted. What is more, it turned out that the site had been previously divided into two parts by the ditch, which is imperceptible these days. Such a division, possibly into production and residential part, is characteristic feature of Roman Age.

In both Roman and Middle Ages, only the kitchen and utility part of the hut were deeply sunk into the ground.

As far as the Roman age is concerned, the clay and a fixed wooden post construction, with a weaving weight is considered to be the most intriguing invention of this period. It was interpreted as stabilizing bottom of a vertical loom.

More over several mobile artifacts can be found, such as hand-made pottery, wheel pottery, weaving accessories and jewellery. As far as ceramics is concerned, a few indications of Dak influence can be noticed. The most outstanding part of decoration was a fibula the Prague type, typical for southern Karpaty Mountains (second half of Vth century). The Huns and Alans initiated the outspread of this kind of artifacts. This is just another artifact linked to Huns' influences. Among the weapons found, there was only the handle of a sword.

One of the most valuable findings from Middle Age is set of pottery workshops. A hollow used for ceramics firing was discovered, as well as utility pit and holes filled with pure clay. Apart from ceramic objects coming from that place, flat stones used for pottery making were found.

Among the numerous early artifacts of Middle Ages, a ceramic animal figure of either a wild boar or an aurochs is worth mentioning. Moldova and Ukraine were the most common places where this kind of objects was to be found between VII and IXth century.

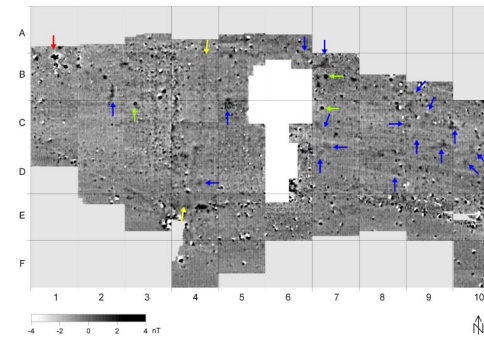
What is more, one of the most characteristic signs of Scandinavian-Baltic culture was discovery of a brooch. The typical artifact for north-east Germany is a buckle found in this particular area. Due to massive migration the object mentioned above were relocated to Lukawica. Merchant route(trade) is said to have gone along the verge of Roztocze.

**M. Piotrowski**

Institute of Archaeology  
Maria Curie-Skłodowska University (Poland)  
e-mail: marcincastello@go2.pl

**K. Werema**

Headland Archaeology LTD.  
(Ireland)  
e-mail: krzysztof@headlandarchaeology.ie



The results of geophysical tests.



Ornaments from Roman Age.



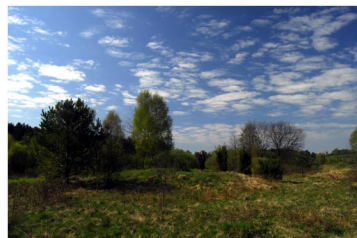
Ornaments from Roman Age.



Selected artifacts from Roman Age.



Early Middle Age pieces of clothing.



The burial mounds from the vicinity of Lukawica.



Early Middle Age ceramics firing hollow.



Ceramic zoomorphic figure (VII-IX c.).